

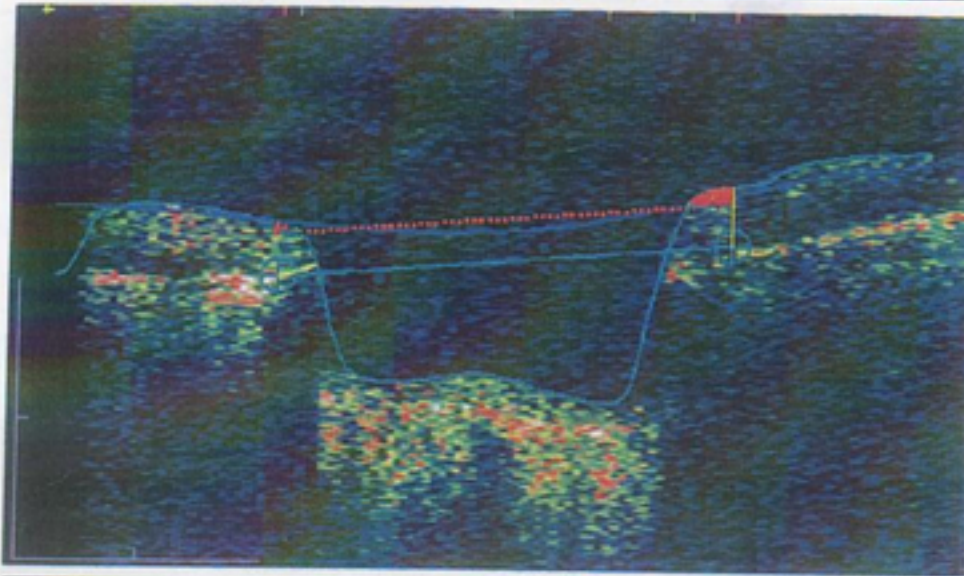
2008

DOB: 2/3/1941, ID: NA, Female

Scan Type: Fast Optic Disc OD

Scan Date: 2/27/2008

Scan Length: 4.0 mm



**Individual Radial Scan Analysis**

Rim Area (Vert. Cross Section): 0.012 mm<sup>2</sup>  
 Avg Nerve Width @ Disk: 0.19 mm  
 Disk Diameter: 1.88 mm  
 Cup Diameter: 1.63 mm  
 Rim Length (Horiz.): 0.25 mm

Cup Offset (microns):

150



Signal Strength (Max 10) 5

**Optic Nerve Head Analysis Results**

Vert. Integrated Rim Area (Vol.) 0.024 mm<sup>2</sup>  
 Horiz. Integrated Rim Width (Area) 0.711 mm<sup>2</sup>  
 Disk Area 3.037 mm<sup>2</sup>  
 Cup Area 2.618 mm<sup>2</sup>  
 Rim Area 0.419 mm<sup>2</sup>  
 Cup/Disk Area Ratio 0.862  
 Cup/Disk Horiz. Ratio 0.983  
 Cup/Disk Vert. Ratio 0.864

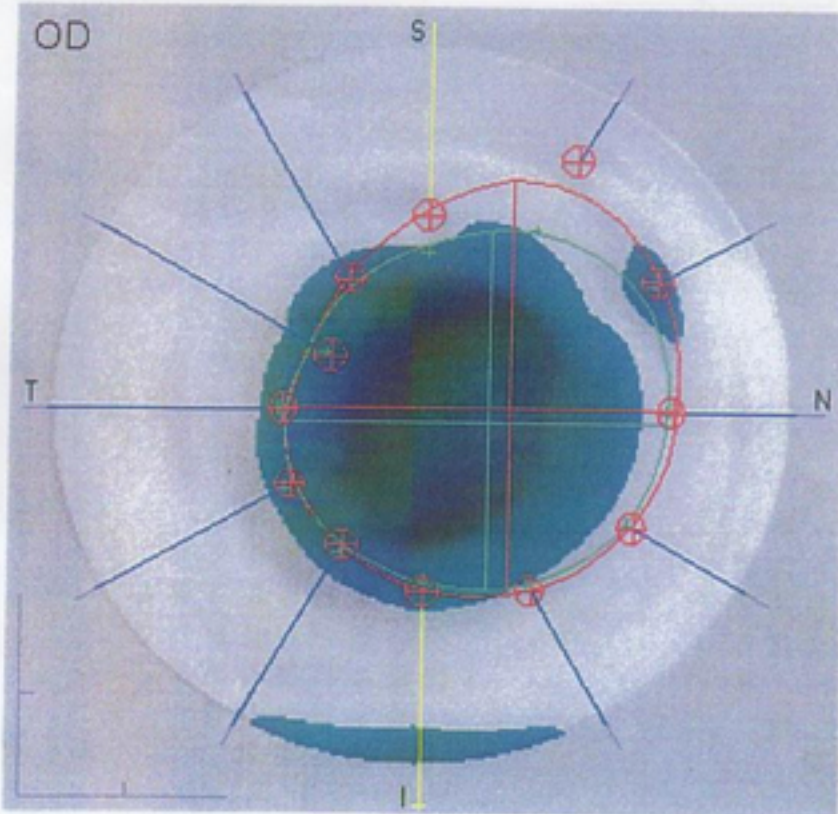
Plot Background:

None  Absolute  Aligned and Shaded

Cup Offset for Topo (microns): 150

Cup Area (Topo): 3.011 mm<sup>2</sup>

Cup Volume (Topo): 0.694 mm<sup>3</sup>



SCAN 1 : Results not Modified.  
 SCAN 2 : Results not Modified.  
 SCAN 3 : Results not Modified.  
 SCAN 4 : Results not Modified.  
 SCAN 5 : Results not Modified.  
 SCAN 6 : Results not Modified.

Signature: \_\_\_\_\_